

# APOLLO HVLP

## Apollo - your start to a perfect finish...

High Volume Low Pressure – the very clever way to spray ! At the heart of every Apollo HVLP system is a powerful and efficient turbine delivering High Volume air at Low Pressure. It's this massive air volume that atomises the paint not the pressure, so the paint stays on the surface and does not bounce back onto surrounding areas nor into the atmosphere. Easy to spray cleanly, efficiently and achieve a fantastic finish with minimal masking off. And because bounce back is reduced you will save paint and help protect the environment too.

Apollo is perfect where space is limited and for on-site spraying, classic cars, shop fitting, decorating, custom kitchen fitters and bath re-enamellers – anywhere needing clean, hassle free spray with a great finish !



Hi Tec Spray Ltd Heronden Road, Park Wood Industrial Estate, Maidstone, Kent ME15 9YR  
Tel: 01622 356590

Hi Tec Spray Ltd Unit 9, Trinity Industrial Estate, Millbrook Road West, Southampton, Hampshire SO15 0LA  
Tel: 02380 778871

Hi Tec Spray Ltd Unit 25, Charles Ind. Estate, Stowmarket, Suffolk IP14 5AH  
Tel: 01449 677970

Hi Tec Spray Ltd Unit 31, Waybridge Industrial Estate, Daniel Adamson Road, Salford, Manchester M50 2DZ  
Tel: 0161 876 4900

## Pro-spray™ 1500<sup>3</sup>

Designed for the serious sprayer, this model has a powerful 1500 watt 3 stage turbine and the ability to handle all types of coatings. The all new ANB300 Proline™ aluminium gun is the ultimate in feel and performance and comes as standard with this model.



Motor Watts	Voltz / Hz	Turbine Stages	Air Hose (metre)	Spray Set Up	hxwd (cm)	KG
1500	220-240/50	3	6	1.3mm	26x31x25	15

110 volt available on request



**Non Bleed Gun!**

### Key ANB300 features -

- “Non Bleed Gun” means air shuts off when the trigger is released - reduces dust lift.
- Stainless Steel Needle & Jet Assembly - essential with water borne coatings.
- Smooth, controllable trigger action.
- Ergonomic, stay cool handle.
- Adjustable fan pattern from horizontal to vertical & additional spot controller for super fine detail work.

### Pro-spray Gun with optional 250ml cup



**A useful range of optional extras is available to help you get the best from your ANB300 Spray Gun**



Spray Set Up Sizes  
0.8mm  
1.3mm  
2.0mm  
2.8mm

250ml paint cup for small quantities, or for use in confined spaces, with storage cap





DATE: 29 May 2012

---

Qty 1 Apollo 1500 turbine unit complete with gun and hoses

**COST £365.00 each**

**TERMS AND CONDITIONS**

Quote Validity	30 days
VAT	Exclusive
Availability	4-5 working days
Carriage	£12.50
Payment	Proforma Invoice

Our full terms and conditions are attached.

Contact  
Steve Brown  
07860 360739

# HI-TEC | SPRAY EQUIPMENT HIRE



MAIDSTONE • MANCHESTER • BIRMINGHAM • STOWMARKET • SOUTHAMPTON



[www.spraydirect.co.uk](http://www.spraydirect.co.uk)

## SPRAY & FINISHING EQUIPMENT SPECIALISTS Largest spray equipment hire fleet in the UK

- CONTRACTOR EQUIPMENT FOR HIRE
- EXPERTISE, BACK UP AND SUPERIOR SERVICE
- SOLELY DEDICATED TO THE SPRAY FINISHING INDUSTRY
- FAST TURNAROUND TO KEEP YOU WORKING

Telephone : **01622 356590**  
Depots located nationwide

# PORTABLE TURBINE SPRAY UNITS

The turbine system offers versatility and performance, yet is compact and portable. All units use high volume of air to atomise paint at low pressure. This results in low overspray, control and higher transfer efficiency. The spray gun has fluid and fan control and comes complete with suction cup. The portable turbine is ideal for the fine finish on site job. Typical applications are: doors, trims, stair cases, small renovation jobs and fine finish work. Suitable materials to be sprayed include dyes, inks, stains, epoxies, lacquers, varnishes and muticolour.

## Standard Duty

110V or 240V turbine unit complete with air hose and standard 1 litre suction gun

**Apollo 700/800 turbine unit**

**Weekly Hire**

**1 Days Hire**

**£70.00**

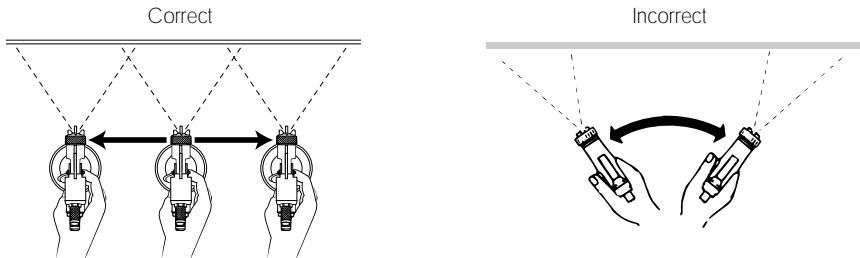
**£45.00**



# Spray Techniques

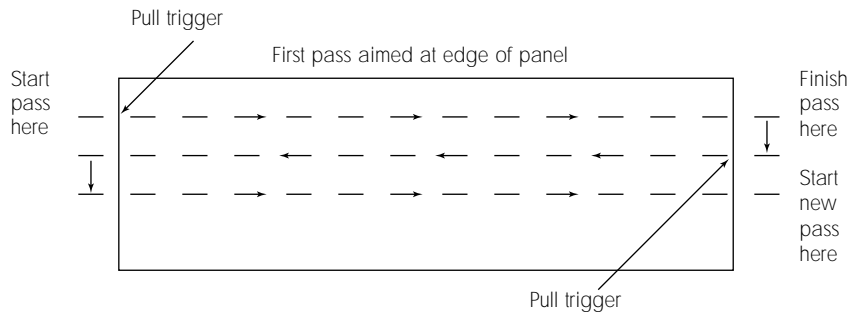
## Spraying Techniques

Position the spray gun perpendicular to and 1 to 8 inches from the spray surface. Spray parallel to the surface and use controlled, smooth passes at an even speed. Start by applying a thin coat of material on the first pass and allow it to tac before applying a second, slightly heavier coat.



## How to Make the Correct Pass

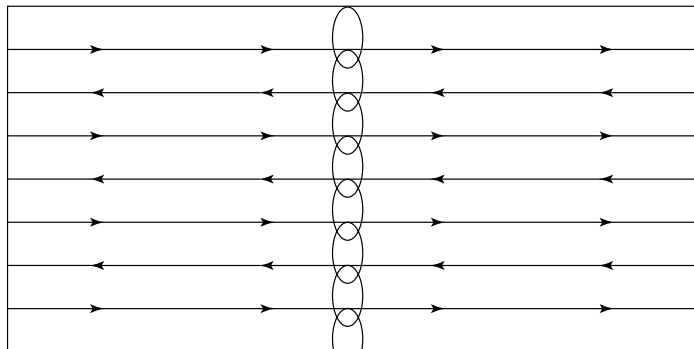
When spraying, trigger the spray gun before starting your pass, and release trigger before stopping the pass. The best results will occur when making passes about 20 inches. Keep the gun perpendicular to the surface and overlap passes approximately 50% to obtain the most consistent, professional finish.



The CAPspray gun is not “all on” or “all off.” With practice, trigger pull and spraying distance can also be used to change the pattern size. The ideal distance for HVLP spraying is 1-8 inches from the substrate. **Remember**, the closer you stay, the more control you have.

## Overlapping Each Pass

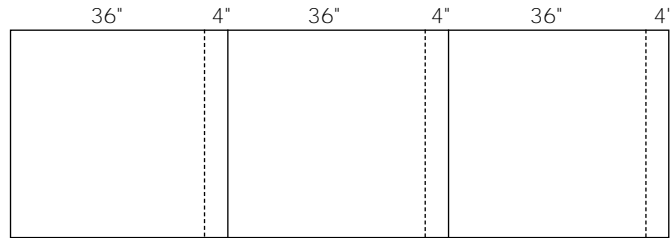
The edges of each spray pattern fade slightly. To maintain even coverage, overlap each stroke.



# Spray Techniques

## Spraying Large Areas

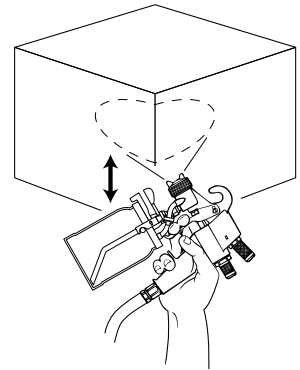
Spray a long panel or wall in sections. Use horizontal or vertical strokes. Keep stroke length to 3 feet. Spraying a longer pattern may cause uneven coverage and excessive overspray. Overlap each section by 4 inches. Narrow panels are best sprayed using vertical strokes to help prevent too much overlapping.



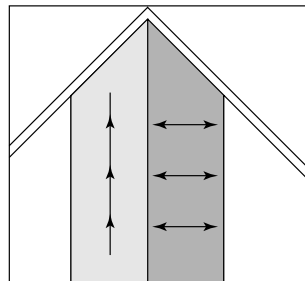
## Spraying the Outside Edges of Corners

Hold the gun directly facing the corner edge so that the surfaces which form the corner are sprayed along the edge.

Spray horizontally for vertical edges, and spray vertically for horizontal edges.



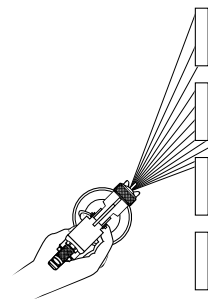
## Spraying the Inside Edges of Corners



Each surface that forms the corner should be sprayed separately. Spray one surface vertically. Spray the other surface with short, even, horizontal strokes. When spraying each surface, overlap slightly into corner.

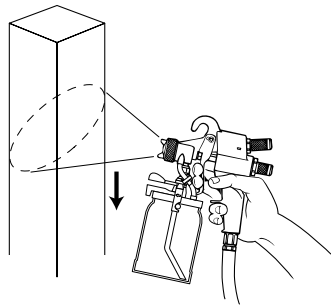
## Spraying Slender Work

Picket fences are sprayed with single strokes, made vertically at an angle. This motion will cover the front and one edge. Spray the other side of each picket at the opposite angle. Place a piece of cardboard behind the fence to catch overspray.



# Spray Techniques

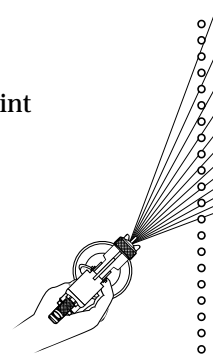
## Spraying Square Posts or Steel



Adjust the material adjustment knob to the desired spray width. Spray two adjacent surfaces at the same time.

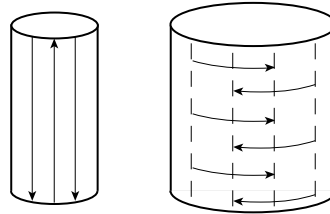
## Grills and Wire Fences

Hold the gun at a sharp angle. Deflect the paint passing through the grill or fence with a flat surface. This will help coat the other side.



## Spraying Round Work

For cylinders up to three feet high or wide, spray vertically. For larger cylinders, such as storage tanks, spray horizontally. For small pipe work or tubular furniture, use the round spray pattern set to the proper diameter.



## Cutting In

Cutting a line “in” is a technique best explained with an example.

Suppose you are spraying horizontally on a wall, and you are approaching a door frame. Do not spray horizontally to the edge of the door frame. LEAVING THE AIR CAP HORNS SET AT HORIZONTAL, CUT IN BY MOVING THE GUN IN A VERTICAL FASHION.

This hides the pattern created by cutting in. Feather the spray or reduce paint flow to gun before cutting in. Use horizontally after spraying vertically, leave air cap horns for vertical spray.

